

Hampshire Antique Restoration

www.hampshire-antique-restoration.co.uk

01489 893632



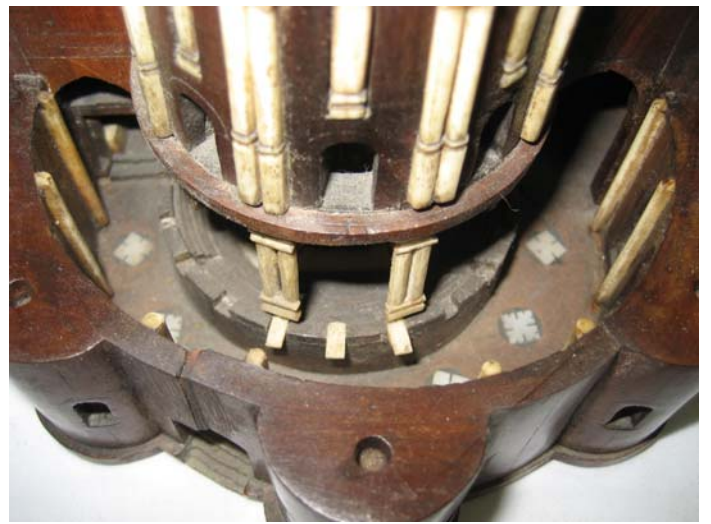
1 - Dome



2 - Mortice



3 - Main ring



4 - Pillars



5 - Door



6 - 1406

Hampshire Antique Restoration

www.hampshire-antique-restoration.co.uk

01489 893632



7 - Fractures



8 - Missing carved section



9 - Losses



10 - Inscriptions

Hampshire Antique Restoration

www.hampshire-antique-restoration.co.uk

01489 893632



11 - Surface cleaning



12 - Losses of ivory columns



13 - Medical silicone used to take the impression

Hampshire Antique Restoration

www.hampshire-antique-restoration.co.uk

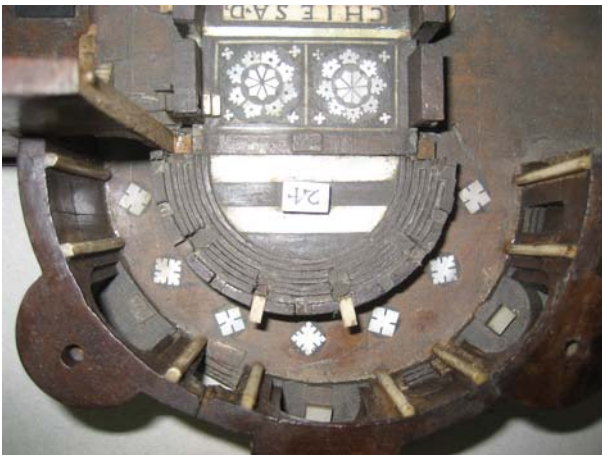
01489 893632



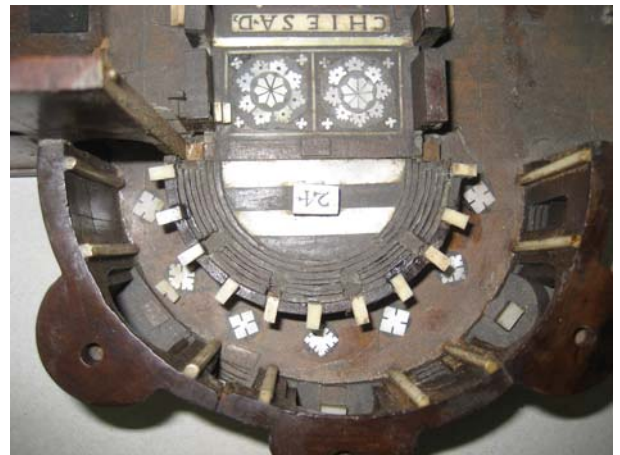
14 - Epoxy castings after colouring
(original far left + 3 duplicates)



15 - Facsimile replacements



16 - Typical losses



17 - Replaced with epoxy castings (LHS before,
RHS after colouring in)



18 - Losses to MOP



19 - Hand cut replacements

Hampshire Antique Restoration

www.hampshire-antique-restoration.co.uk

01489 893632



20- Testing the technique



21 - Fit replacements



21 - Fit replacements



21 - Fit replacements



22 - Olivewood splice



23 - After colouring

Hampshire Antique Restoration

www.hampshire-antique-restoration.co.uk

01489 893632



24 – Faded old repairs



25 – After colouring (and final waxing)



26 – Degraded resin



27 – Stopping wax fill



28

– Ivory cross (partially complete)



29 –After colouring

Image Appendix



30 -After final waxing

Image Appendix



a



b



c



d



e



f

